



# INVEST Summer School 2022

## Ensuring quality of public services in sustainable regional development



### Course Duration

**29/5 - 4/6/2022**

With preliminary  
tasks 9-20/5/2022



### Course characteristics

**Virtual and Physical  
Mobilities**

**Intensive week in  
Plovid, Bulgaria**



### Info

**All activities, including travel  
and accommodation, are  
covered by the Erasmus+  
programme and INVEST project**  
**5 ECTS**



### Application

**Please apply  
here by  
10/4/2022**

**Ensuring quality of public services in sustainable regional development** is a joint Summer School for BSc (with completed two years of studies), MSc and PhD students from all disciplines in INVEST alliance partner universities. It will be implemented in the period 9 May – 6 June 2022 including virtual and physical participation hosted by University of Agribusiness and Rural Development, Plovid, Bulgaria. The course is **free** for the admitted students and will be structured around four thematic panels:

- Quality in education and training
- Social services and social inclusion
- Social innovation and sustainable regional development
- Social entrepreneurship

**your INVESTment in knowledge**



ctrl

Q

## TAKE ADVANTAGE OF THIS OPPORTUNITY OPEN UP YOUR FUTURE

*“Quality is not an act. It is a habit.”*  
Aristotle



After completing the summer school:

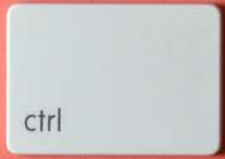
- You will have knowledge of assuring quality in education and training, social services and social inclusion, social innovation and social entrepreneurship.
- You will understand contemporary challenges to sustainable regional development and new entrepreneurial models of social economy.
- You will make individual and group research and innovation projects in the INVEST Regional Living Lab.

- You will be able to work on individual and group assignments, present your own achievements in the field of social business models and social innovation in education, community and/or social services and
- You will be also able to extend your network and contacts with key stakeholders in sustainable regional development cooperating in INVEST Regional Living Lab.



The summer school will be divided into two parts:

- (1) **Two weeks of virtual mobility** - including preparatory work, induction trainings and provision of basic terminology, working in the e-learning and having access to specialized training and guidance materials. Initial assignments will be given in cooperation with the mentoring support of dedicated coaches.



## TAKE ADVANTAGE OF THIS OPPORTUNITY OPEN UP YOUR FUTURE

*"Earth provides enough to satisfy every man's need, but not every man's greed." Mahatma Gandhi*

(2) **The intensive physical course** will last one week and will be divided into four panels of lectures and discussions:

- **Quality in education and training;**
- **Social services and social inclusion;**
- **Social innovation and sustainable regional development;**
- **Social entrepreneurship,**

along with field visits and working in teams on innovative ideas in social entrepreneurship

### **As a participant in the summer school:**

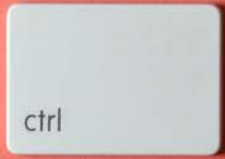
- You will meet with prominent lecturers and researchers, key stakeholders in public services assurance and colleagues interested in sustainable regional development, social innovation and social entrepreneurship.
- You will learn about Bulgarian culture, Bulgarian cuisine and experience in ensuring quality of public services and sustainable regional development.

- You will also participate in the field visits and the work of the INVEST Living Labs in Bulgaria.
- You will also plan and implement a joint cultural evening and have the opportunity to join cultural and social events in Plovdiv and the region during your stay in Bulgaria.
- At the end of the course, you will be able to present the results of your individual and group assignments, to be awarded and to provide feedback of your satisfaction.

The summer school will be concluded with an **Awarding ceremony** presenting your ideas and getting evaluation by the jury members of the INVEST Summer School 2022. **Special prizes will be given to the most innovative and influencing presentations.**

A week after, *feedback* will be collected.





## TAKE ADVANTAGE OF THIS OPPORTUNITY OPEN UP YOUR FUTURE

*"Inclusion is not a matter of political correctness. It is the key to growth." Jesse Jackson*



### Student selection

- BSc (you should have completed two years of studies), MSc or PhD student.
- Minimum requirements for English language level is B2

Each partner university will select 5 students. You should send your application to your respective coordinator by 10th of April 2022. Your application should be in the form of a motivation letter or video, including your motivation for taking the course and how you plan to utilize the information you will gain from the course.

**Please apply [here](#) by 10/4/2022**



### Teaching methods and student workload

The summer school will be implemented (both online and as a physical event) of **four phases:**

**(1) Preparatory work – phase 1 (virtual mobility):** 5 days in convenient time for the participants in recorded online sessions, flexible planning of time for both synchronous and asynchronous participation and communication;

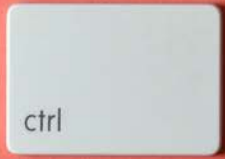
**(2) Preparatory work – phase 2 (virtual mobility):** 5 days of working on the assignments;

**(3) Intensive program on place in Plovdiv, Bulgaria (physical mobility):** expert lecturers, round table discussions / workshops; field trips; working in groups on the assignments and making a presentation of team work.

**(4) Feedback week:** online.

Total duration of study (excluding 2 travel days): 15 days

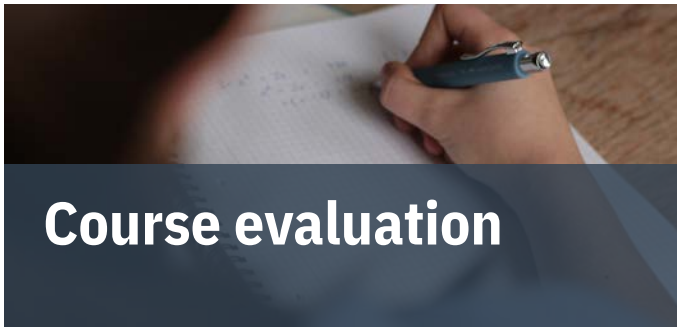
**ECTS credits: 5**



## TAKE ADVANTAGE OF THIS OPPORTUNITY OPEN UP YOUR FUTURE

*"Quality means doing it right  
when no one is looking."*

*Henry Ford*



### Course evaluation

The summer school will be evaluated on a scale of 1-5, where 5 is excellent and 1 is satisfactory.

The evaluation of the summer school will be based on the approved completion of the preliminary assignments (10%), expert evaluation of the presentation of team work (20%), report of the solution (30%), participation in joint online meetings and group work (20%) and the learning diary (20%).

*The group assignment will be to present an innovative business model for a social enterprise applying the strategic management template of Business Model Canvas.*

The model will be evaluated according to the following criteria:

- (1) innovativeness and significance as a whole;
- (2) value of the idea for sustainable regional development;
- (3) potential for uptake / implementation;
- (4) potential for further development in INVEST;
- (5) communicating the idea with the presentation.



# INVEST Summer School 2022



## Ensuring quality of public services in sustainable regional development



### Contact information

#### Slovak University of Agriculture in Nitra (SUA):

Monika Bumbalová,  
monika.bumbalova@uniag.sk

#### University of Agribusiness and Rural Development (UARD):

Miglena Kazashka, mkazashka@uard.bg

#### University of Thessaly (UTH):

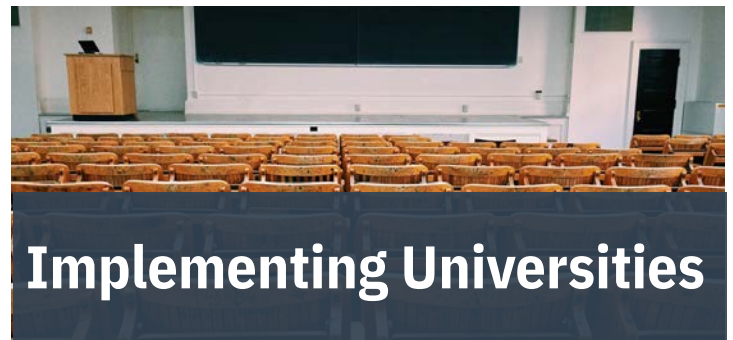
Vasilis Kyriatzis, kyriatzis@uth.gr

#### Karelia University of Applied Sciences (Karelia UAS):

Kaija Saramäki, kaija.saramaki@karelia.fi  
Sini Rantanen, sini.rantanen@karelia.fi

#### Van Hall Larenstein University of Applied Sciences (VHL):

Jannet Lavalette, jannet.lavalette@hvhl.nl  
Korrie Hoekstra, Korrie.hoekstra@hvhl.nl



### Implementing Universities



UNIVERSITY OF  
THESSALY



University of Agribusiness and Rural Development (Bulgaria), Slovak University of Agriculture in Nitra (Slovakia), University of Thessaly (Greece), Karelia University of Applied Sciences (Finland), Van Hall Larenstein University of Applied Sciences (the Netherlands)

# INVEST Summer School 2022



## Ensuring quality of public services in sustainable regional development

### SCHEDULE

9-13/5/2022



#### Preparatory work – phase 1 (ONLINE: synchronous and asynchronous communication)

- ✓ Introductory sessions and expert lectures
- ✓ Working in the platform
- ✓ Studying materials
- ✓ Provision of individual assignments
- ✓ Research work
- ✓ Individual meetings and sessions

16-20/5/2022



#### Preparatory work – phase 2 (ONLINE: synchronous and asynchronous communication)

- ✓ Expert lectures
- ✓ Working on individual and group assignments
- ✓ Working with coaches

29/5 -  
4/6/2022



#### Short intensive program in Plovdiv, Bulgaria

- ✓ *Physical mobility*
- ✓ *Expert lectures*
- ✓ *Round table discussions / workshops*
- ✓ *Working in groups on the group assignments*
- ✓ *Working with coaches*
- ✓ *Field trips and INVEST Regional Living Lab projects*
- ✓ *Cultural and social events*
- ✓ *Presentations*
- ✓ *Awarding*

30/5/2022  
Opening Ceremony

3/6/2022  
Awarding Ceremony

6-10/6/2022



#### Feedback to Students

**15 Days of Study**  
**5 ECTS**